

Tips to Help in Collection



When should you put your carts out?

Collection times can vary, so please have your waste and recycling to the street's edge by 6:00 a.m. the day of collection to ensure your material is collected. If collection crews pass your home and your material is not out, you will need to wait until the next week for collection or pay a fee to have the truck return.

How should you position your carts?

Place your waste and recycling carts/totes on a level surface at the street's edge with the wheels and handle facing the house. Please keep 2 feet of space between each of your carts/totes as well as other fixed objects, such as mailboxes.



How should you fill your carts?

Waste and recycling carts/totes provide a convenient way to handle your weekly accumulation of material. Please follow your community's guidelines for proper placement of material. This will ensure that you don't receive a service rejection notice or "Oops" tag. If you receive an "Oops" tag, they will indicate the reason(s) your material was not collected.

Please do not jam or overpack materials into carts/totes. The materials may get stuck and not come out when the carts/totes are tipped. Lids must be closed to prevent your materials from blowing out, water and snow from getting in, and unwanted rodents from being a nuisance. Material exceeding the designated height of the cart may result in an "Oops" tag.

Recycling materials must be placed loose in recycle carts/totes. There is no need to sort or contain loose material in a bag of any kind when you place it in your carts/totes. If recycling material is contained in a bag inside your recycling carts/totes, it will be treated as trash. The only material that should be contained in a bag is shredded paper, which can be recycled in a clear plastic bag.



Customer Service

1-800-330-7107

716-754-8226

Monday - Friday:

7:00 a.m. - 6:00 p.m.

Saturday:

7:30 a.m. - 11:30 a.m.

Closed on Sundays &
Holidays

CS@Modern-Corp.com

ModernCorporation.com





Commonly Accepted Bulk Items

■ Appliances

(Dishwashers/Dryers/Washers/Microwaves/Toasters)

■ Appliances (Refrigerators/Freezers/Dehumidifiers)

■ Aquariums (10 Gallons or Smaller)

■ Bed frame & Bed Parts (Frame, Headboard, Rails)

■ Bedding (Mattress/Box Spring = 1 item)

■ Bicycle

■ Blinds/Shades

■ Brooms, Mops, Buckets

■ Carpet/Linoleum (Bound 18" Diameter by 24" Length)

■ Closet Doors & Other Doors

■ Entertainment Center

■ Exercise Equipment

■ Furniture (Cabinet/Desks/Dresser/Hutch/Vanity)

■ Furniture (File Cabinets/Shelving Units/Bookshelves)

■ Furniture (Tables/Couches/Chairs/Recliners)

■ Garden Hose and Reels

■ Gardening Tools (Shovels, Rakes)

■ Grill (Propane Tank Removed)

■ Hot Water Tank

■ Ladders

■ Light Fixtures (Lamps/Chandeliers/Ceiling Fan-Light)

■ Lumber and Landscape Timbers

(Securely Bundled)

■ Outdoor Equipment (Lawn Mower/Snow Blower)

■ Outdoor Furniture (Patio Furniture/Umbrella/Toys)

■ Plastic Piping/Tubing/Drain Tile

(Bound 18" Diameter by 24" Length)

■ Pool Covers (Folded and Bound)

■ Pool Filter

■ Toilet/Sink

■ Window/Doors/Screens



Commonly Unaccepted Bulk Items

■ Automotive Parts (Batteries/Tires/Fenders/Gas Tanks)

■ Bathtubs

■ Boats (Canoes/Paddle Boats/Kayak)

■ Ceiling Tiles

■ Concrete

■ Construction and Demolition Waste

(Contractor Generated)

■ Construction and Demolition Waste

(Residentially Generated)

■ Dirt

■ Drywall

■ Electronics (Televisions/Computers/Monitors/Etc.)

■ Explosive, Toxic/Hazardous Materials

■ Fencing

■ Garage Doors

■ Glass Doors

■ Hazardous Material

(Toxic/Gasoline/Oils/Flammables/Liquids/

Pesticides/Herbicide)

■ Hot Tubs/Spas

■ Loose Debris

■ Lumber

■ Medical Waste

■ Plywood/Paneling

■ Pressure Treated Lumber

■ Roofing Material

■ Siding

■ Sliding Doors/Windows

■ Swing Sets

■ Trailers

■ Truck Caps/Bed Liners

Additional Information:

1. Loose materials must be bundled or contained
2. Bundled material cannot exceed 4 foot in length and 18 inches in diameter
3. Freon must be removed and tagged by a licensed professional
4. No item can exceed 60 pounds in weight
5. All items must be easily managed by two employees
6. Do not stack bundled items
7. Cushions are acceptable with the couch
8. No bagged debris

While we tried to identify many of the commonly acceptable and unacceptable items we accept, the list is not complete.

If you have any questions please contact Modern's Customer Service at 716-754-8226. Materials not collected will be tagged indicating the reason why it was not collected.

If you have paints, flammables, liquids or other possible hazardous materials and you're not sure how to dispose of them, please contact Hazman at 716-998-8073 or visit their website Hazmanusa.com/materials

FAQ's New Cart-Based Program

HOW IS TRASH AND RECYCLING COLLECTED IN A TOTE/CART-BASED PROGRAM?

Totes/carts are collected using an automated or semi-automated collection device attached to the collection vehicle. Acceptable waste and recycling must fit in your tote/cart with the lid closed. Place at the streets edge the night before or by 6 am the day your collection is scheduled.

WHAT IS THE BEST WAY TO PLACE MY TOTE/CART FOR COLLECTION?

Place totes/carts a minimum of three (3) feet away from cars, mailboxes, and other objects. Handles/wheels should face towards your residence with the lid closed. Place totes/carts at the streets edge either the night before or by 6 am the day of collection.

MAY I USE A CAN OR CART NOT PROVIDED BY MY COMMUNITY?

No, only totes/carts issued by your community will be collected.

WHAT ITEMS ARE COLLECTED?

Acceptable waste and recycling must fit in your tote/cart with the lid closed. Place at the streets edge the night before or by 6 am the day your collection is scheduled.

WHAT IF I HAVE TRASH THAT WON'T FIT IN MY FULL TOTE/CART?

If you need more capacity for trash and recycling, contact your community to see if you can purchase additional service.

WHAT ARE BAG TAGS?

Bag Tag Stickers are available in most communities for purchase. Bag Tag Stickers can be placed on bags of waste when you have the occasional need for more service capacity (trash tote/cart is full). Bag Tag Stickers are placed on 30-gallon size bags (40-pound weight limit). You will place the bags with pre-purchased Bag Tag Stickers next to your full trash tote/cart and in clear view of the driver. Driver will only collect bags with a sticker. Do not place stickers on trash cans and do not place bags with stickers in trash cans.

WHEN ARE LARGE ITEMS COLLECTED?

This newsletter features a calendar that identifies dates when bulk items will be collected in your community as well as a list of commonly acceptable and unacceptable bulk items. We recommend consulting your community's website for current and up to date information about your specific program.

HAS RECYCLING COLLECTION CHANGED?

A menu of the "Best Items to Recycle" is included. Acceptable materials for recycling must be placed loose in your recycling tote/cart with the lid closed. For safety reasons, recyclables placed in a bag will be considered waste and will be disposed of.

Cardboard flattened and properly sized should be placed next to your full tote/cart for collection. Cardboard and other acceptable recyclables will be collected ONLY if the driver can safely place it into your tote/cart once its emptied. To ensure collection, flatted and size cardboard so it can fit into your emptied cart with the lid closed.

Cardboard boxes will no longer be collected as trash on your "off" recycling week.

Recycling Guidelines

✓ Best Items to Place in Your Recycling Cart

Please be advised that if your recyclables are placed in a plastic bag, they will be disposed of as trash. All recyclables should be placed in the cart loose.

Paper Place loose in cart. Use clear plastic bags for shredded paper **ONLY**.



Newspaper, Office Paper, Paper Bags, Junk Mail, Paperboard & Magazines

Bottles & Jars



Clear Bottles & Jars

Cardboard



Cardboard & Pizza Boxes
Flatten cardboard. Remove wax paper from pizza boxes

Plastic



Jugs & Bottles with Small Top Openings
♻️ ♻️

Metal



Aluminum Cans, Metal Cookware, Steel & Tin Cans

✗ Unacceptable Items in Your Recycling Cart

Unacceptable Metal



Aerosol Cans, Propane Tanks, Batteries & Paint Cans

Electronic Waste

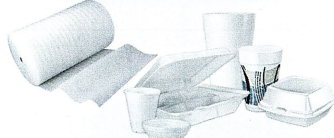


Electronics, Cords & Christmas Lights

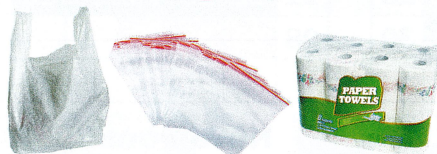
Clothing



Styrofoam



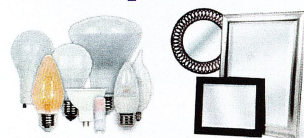
Plastic Bags & Film



Coated Fiber Products



Unacceptable Glass



Light Bulbs & Plate Glass/Mirrors

Wood Items



Yard Waste



Medical Waste/Syringes



As well as...

Diapers
Hardcover Books
Concrete
Flammable Liquids

Dishes or Ceramics
Household Cleaners
Chains/Strapping
Garden Hoses

Chemicals (Dry or Liquid)
Pool Liners/Tarps/Covers
Inflatable Pools
Items with Gasoline

Like us on Facebook
for Recycling Tips & Info
facebook.com/ModernDisposal

ModernCorporation.com/FAQS
800-330-7107

MODERN
Disposal Services

Town of Porter Collection

2022

 **Week A**
Recycling

 **Week B**
Recycling



Holiday—no collection, pick up for the rest of week will be delayed by one day

2022 Holidays with Service Interruption

Memorial Day
May 30th

Independence Day
July 4th

Labor Day
September 5th

Thanksgiving Day
November 24th

Bulk Collection Dates

1/15/22
5/14/22
8/13/22
11/12/22

added Bulk collection date
9/24/22

January 2022

S	M	T	W	T	F	S
26	27	28	29	30	31	1
2	3	4	5	6	7	8
9	10	11	12	13	14	15
16	17	18	19	20	21	22
23	24	25	26	27	28	29
30	31	1	2	3	4	5

February 2022

S	M	T	W	T	F	S
30	31	1	2	3	4	5
6	7	8	9	10	11	12
13	14	15	16	17	18	19
20	21	22	23	24	25	26
27	28	1	2	3	4	5
6	7	8	9	10	11	12

March 2022

S	M	T	W	T	F	S
27	28	1	2	3	4	5
6	7	8	9	10	11	12
13	14	15	16	17	18	19
20	21	22	23	24	25	26
27	28	29	30	31	1	2
3	4	5	6	7	8	9

April 2022

S	M	T	W	T	F	S
26	27	28	29	30	1	2
3	4	5	6	7	8	9
10	11	12	13	14	15	16
17	18	19	20	21	22	23
24	25	26	27	28	29	30
1	2	3	4	5	6	7

May 2022

S	M	T	W	T	F	S
1	2	3	4	5	6	7
8	9	10	11	12	13	14
15	16	17	18	19	20	21
22	23	24	25	26	27	28
29	30	31	1	2	3	4
5	6	7	8	9	10	11

June 2022

S	M	T	W	T	F	S
29	30	31	1	2	3	4
5	6	7	8	9	10	11
12	13	14	15	16	17	18
19	20	21	22	23	24	25
26	27	28	29	30	1	2
3	4	5	6	7	8	9

July 2022

S	M	T	W	T	F	S
26	27	28	29	30	1	2
3	4	5	6	7	8	9
10	11	12	13	14	15	16
17	18	19	20	21	22	23
24	25	26	27	28	29	30
31	1	2	3	4	5	6

August 2022

S	M	T	W	T	F	S
31	1	2	3	4	5	6
7	8	9	10	11	12	13
14	15	16	17	18	19	20
21	22	23	24	25	26	27
28	29	30	31	1	2	3
4	5	6	7	8	9	10

September 2022

S	M	T	W	T	F	S
28	29	30	31	1	2	3
4	5	6	7	8	9	10
11	12	13	14	15	16	17
18	19	20	21	22	23	24
25	26	27	28	29	30	1
2	3	4	5	6	7	8

October 2022

S	M	T	W	T	F	S
25	26	27	28	29	30	1
2	3	4	5	6	7	8
9	10	11	12	13	14	15
16	17	18	19	20	21	22
23	24	25	26	27	28	29
30	31	1	2	3	4	5

November 2022

S	M	T	W	T	F	S
30	31	1	2	3	4	5
6	7	8	9	10	11	12
13	14	15	16	17	18	19
20	21	22	23	24	25	26
27	28	29	30	1	2	3
4	5	6	7	8	9	10

December 2022

S	M	T	W	T	F	S
27	28	29	30	1	2	3
4	5	6	7	8	9	10
11	12	13	14	15	16	17
18	19	20	21	22	23	24
25	26	27	28	29	30	31
1	2	3	4	5	6	7



4746 Model City Road, P.O. Box 209
Model City, NY 14107-0209

Presorted Standard

US Postage

PAID

Buffalo, NY

Permit No. 1812

TRASH TALK

**Your 2022 Every
Other Week Recycling
Calendar is Inside**

**Also Updated Recycling
Guidelines**

 Printed on Recycled Paper

TOWN OF PORTER



Recycling & Trash News

Please Use This Newsletter & Recycling
Menu To Assist You With Your Recycling &
Trash Program

Why Recycling Correctly Is So Important

The recycling process is a shared responsibility between Modern as your processor and you as the resident. The quality of the materials placed in your carts/totes for recycling is now more important than ever. Placing unacceptable items in your recycle carts/totes will result in them being thrown away as trash, which will then result in costs paid for by tax dollars. The costs incurred to remove and dispose of unacceptable items from recycling facilities has a negative impact on municipalities everywhere.

Curbside recycling programs are designed to redirect routinely found and commonly used items in your home. The recycling menu in this newsletter features the best items to recycle.

Curbside recycling carts/totes should never be used to dispose of clothing, pillows, carpeting, lumber, car parts or furniture. These items are not acceptable for curbside recycling. There are many local resources available to donate, reuse or dispose of items you no longer need. Contact your municipality to find these outlets designed to help you recycle or reuse these materials responsibly within your community.

How We Can Reduce Waste and Improve Recycling Efforts

- Donate furniture and clothing.
- Compost food scraps.
- Mulch grass
- Use multiple reusable grocery bags
- Source food locally through food cooperatives or community gardens.
- Borrow or rent items you only need once.
- Buy in bulk to save on packaging.
- Choose to purchase items in minimal packaging.
- Be sure items purchased can be recycled, reused or returned to the manufacturer.
- Place items in your recycle cart that are on the current menu of best items to recycle.

**According to the EPA,
there was 292.4 million
tons of MSW in 2018 and
68.2% of that was recycled
or composted paper and
paperboard. This is up from
42.8% in 2000. Let's all do
our part to keep moving in
the right direction.**